

**CHRISTOPHER KUHN**  
**MATERIAL WITNESS**

A PUBLICATION OF SONCE ALEXANDER GALLERY  
NOVEMBER 2014

SONCE  
ALEXANDER  
GALLERY

**CHRISTOPHER KUHN**  
**MATERIAL WITNESS**

SONCE ALEXANDER GALLERY  
NOVEMBER 1 - DECEMBER 18, 2014

SONCE ALEXANDER GALLERY is proud to present Los Angeles-based painter Christopher Kuhn's solo exhibition *Material Witness* at the gallery's **new location** in the Culver City Arts District.

Exposing beauty in humanly imperfection, Christopher Kuhn reveals traces of past decisions, revisions and additions to his compositions on canvas. His practice imprints the steps of the creative process. Contrasting today's technological bombardment of information, Kuhn's paintings invite the viewer to take pleasure in slow consumption.

Christopher Kuhn's work accepts as well as celebrates the limitations of painting, honoring a historical perspective on the medium. Kuhn constructs gestural abstractions grounded by intersections of geometrical figures, composed intentionally as accessible deliberations. His works, such as 'Midnight Mood' and 'Security Blanket', are a conscious modern transmission exempt from contemporary distractions; a series of movements where earliest elements are aligned with previous works and must be studied to understand ordering. With an artistic dialogue that reflects and admires the artist's immediate environment of the surrounding Los Angeles area, Kuhn permeates modern influences with a sense of dramatic urgency negated by the techniques employed.

*Material Witness* embodies Kuhn's approach to the practice of painting.

"I take words and phrases from little things I catch on the television or radio...It's a long list of phrases, words and interesting cultural references. I incorporate these ideas for naming when I have a work or a show. 'Material witness' is a legal term meaning a witness that is essential to the case. This is not the exact definition but it's what I take from it; close enough. Poetically, in terms of painting, I like it because it deals with material (paint) as the witness. It names the making of painting itself... revealing the history of the creation of the work." -Christopher Kuhn, Los Angeles

Kuhn's training includes graduate-level studies at University of Tennessee Knoxville (2008), Post-Bac Certificate at School of the Museum of Fine Arts Boston (2007) and BA at American University of Paris, France (1999). His work has been featured in exhibitions across the United States including: Autonomie, Torrance Art Museum, White Box Contemporary, George Lawson Gallery, 1010 Gallery, and The Gallery at the Belcourt. His work has been selected for publications including: Los Angeles Times, Fabrik, SMFA Press and Nashville Scene. Kuhn lives and works in Los Angeles, California, USA.

**M**YSTIFY. THE ESSENCE of this word describes the work of Christopher Kuhn. With so many twists and turns of color, one could imagine that the details are meant to confuse the viewer. It took me a few glances to really understand what Christopher Kuhn was presenting in his work.

Material Witness, Kuhn's exhibit at the Sonce Alexander Gallery opening on November 1st, is a collection of eclectic pieces that challenge the every day art appreciator. Splashes of controlled color and seemingly uncontrolled brush strokes work together to create a style of "Abstract Expressionism" that I personally admire. The strength of color, the depth of the shapes and the simplicity used by Kuhn, create an epileptic sense when the brush goes from palette to canvas.

At first glance bewilderment leads to an immediate want to see a naivety in the artist and work's loaded paint surface featuring narrative titles. But there is something much deeper to the work. I believe Christopher channels the simplicity of Cy Twombly, Jackson Pollock's aggressiveness, along with Mark Rothko's love for symmetry.

Christopher Kuhn's work challenges the viewer to access the vast untapped potential of the brain. Conceptualization and imagination are highly recommended when stepping into the world of this artist. The first piece that caught my eye was Tie Breaker created in 2014. This painting stands out because of its use of brushstrokes, guiding the viewer through a visual racetrack. As you follow each stroke to a corresponding color, it seems to signal a change in thought.

This painting reminded me of the grueling days of learning how to tie your sneakers as a child. I immediately laughed when I saw the piece. It placed me in a moment where I could actually feel myself trying over and over again to be a "big kid", the repetition and the reconsideration of a simple moment and movement.

Christopher Kuhn's work reveals character. Each piece tells its own story with no perceivable origin. The character of a work is important in Art. When a piece takes on a life of it's own, it has a soul within the gallery and this extends through the reactions and comments of appreciation.

*Written By Badir McCleary for ArtAboveReality.com*



**Light Sleeper**

2014

84 x 60 inches

Oil and Acrylic on Linen



**Way Out West**

2014

50 x 34 inches

Oil on Linen



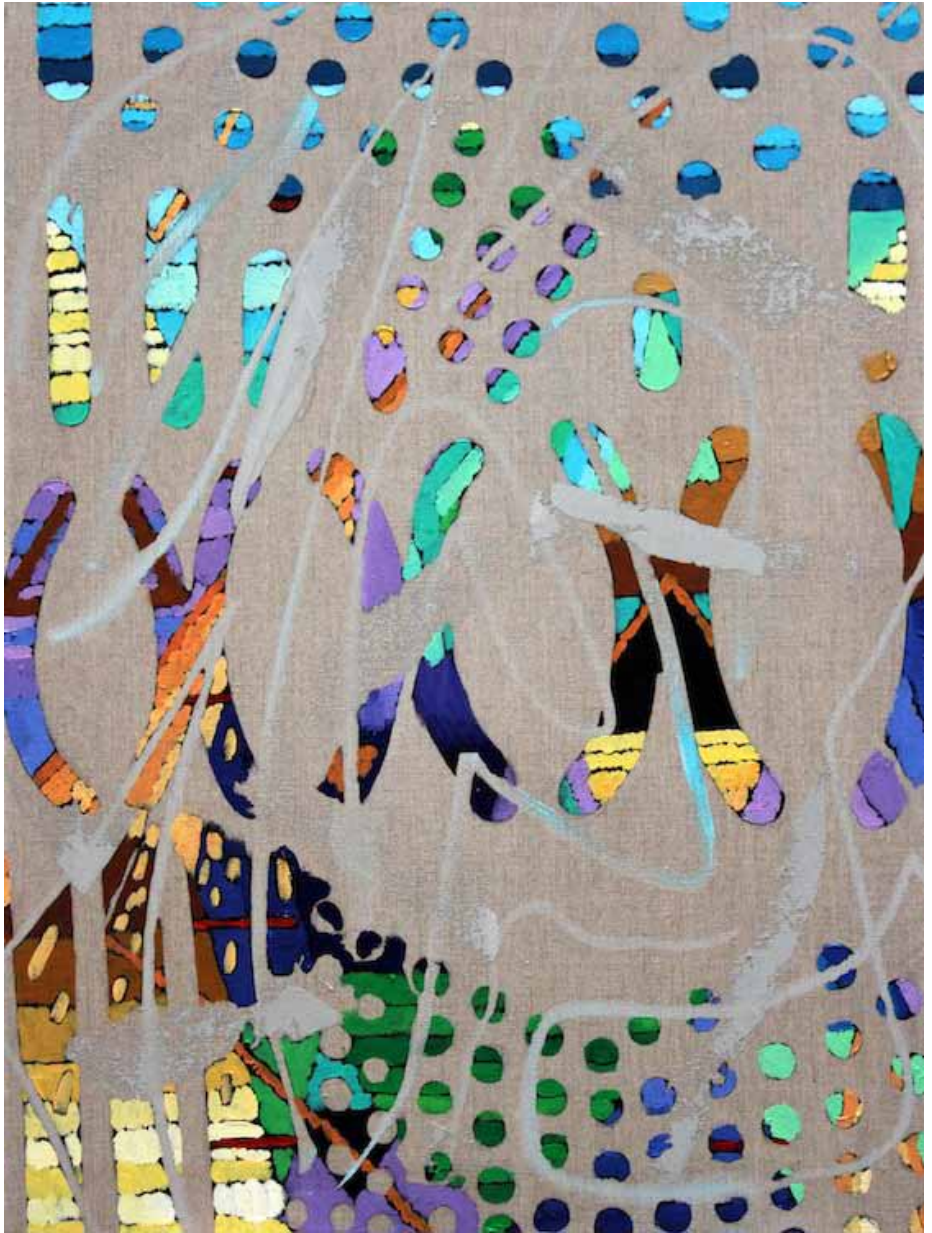
**Midnight Mood**

2014

72 x 66 inches

Oil and Acrylic on Linen





**Lost Cause**

2013

24 x 18 inches

Oil on Linen

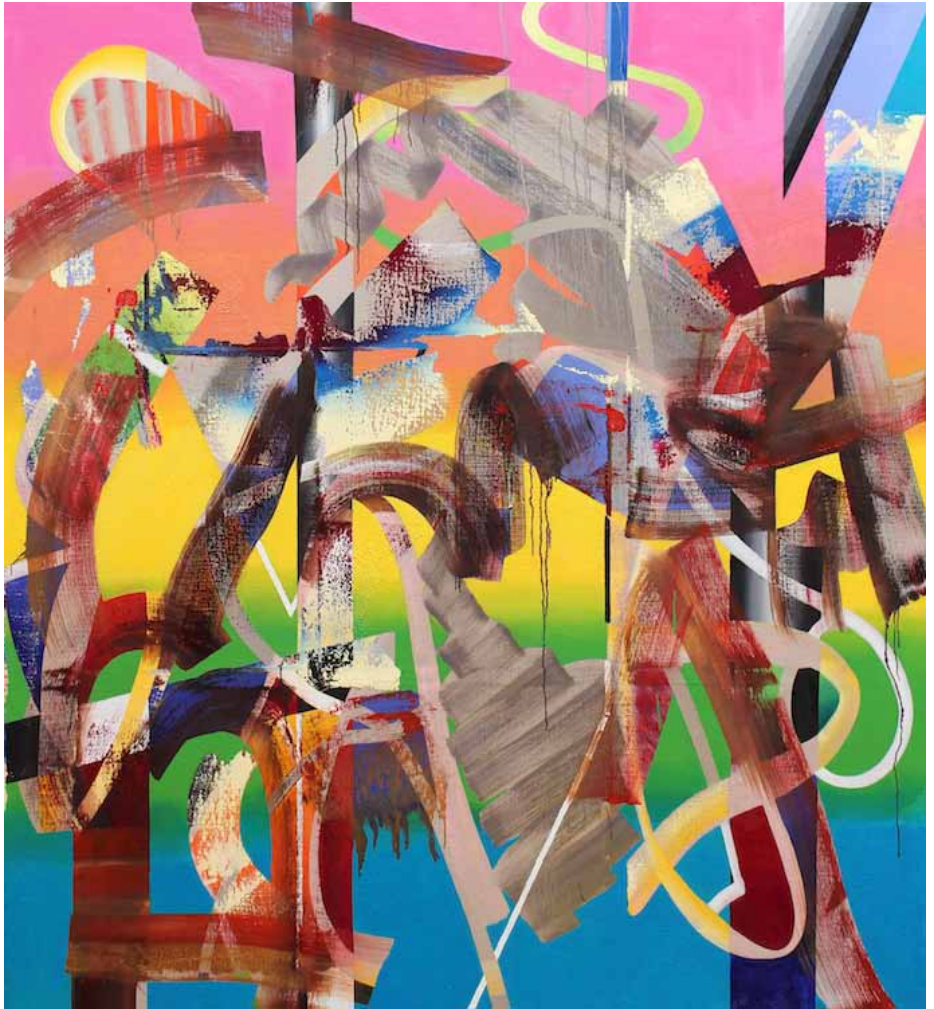


**Silent Majority**

2014

36 x 30 inches

Oil on Linen



**Poster Child**

2014

72 x 66 inches

Oil on Linen



**Quicksilver**

2013

19 x 15 inches

Oil on Linen



## **Shadow Puppets**

2014

19 x 15 inches

Oil on Linen



**Yellow Jacket**

2013

20 x 15 inches

Oil on Linen



**Table Read**

2014

48 x 36 inches

Oil on Canvas



**Fair Weather Friend**

2014

36 x 48 inches

Oil on Linen





**Birds Nest Soup**

2014

72 x 60 inches

Oil and Acrylic



**Tiebreaker**

2014

14 x 12 inches

Oil on Canvas



**Grass Stains**

2014

28 x 25 inches

Oil on Canvas

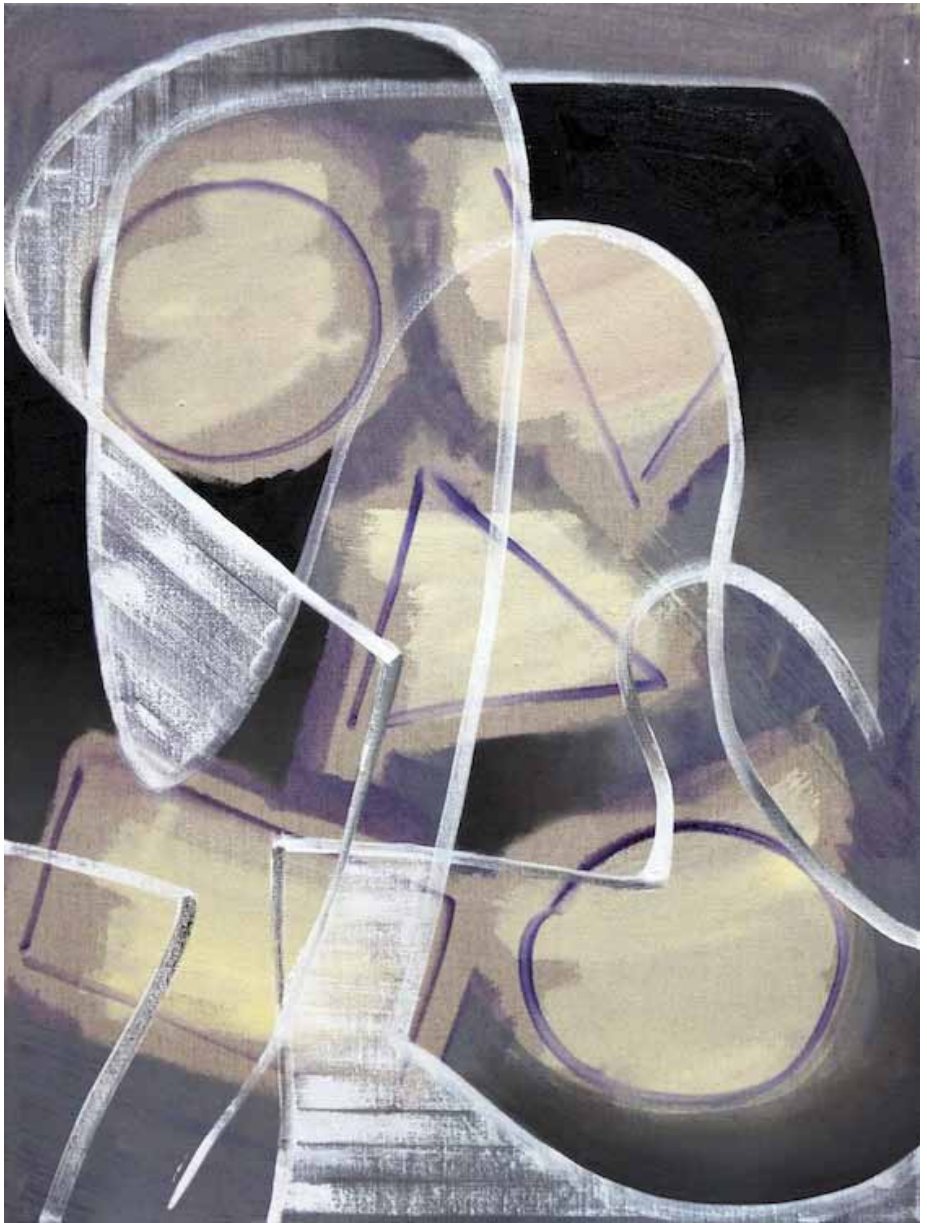


**Parts and Accessories**

2014

31.5 x 24.75 inches

Oil on Linen

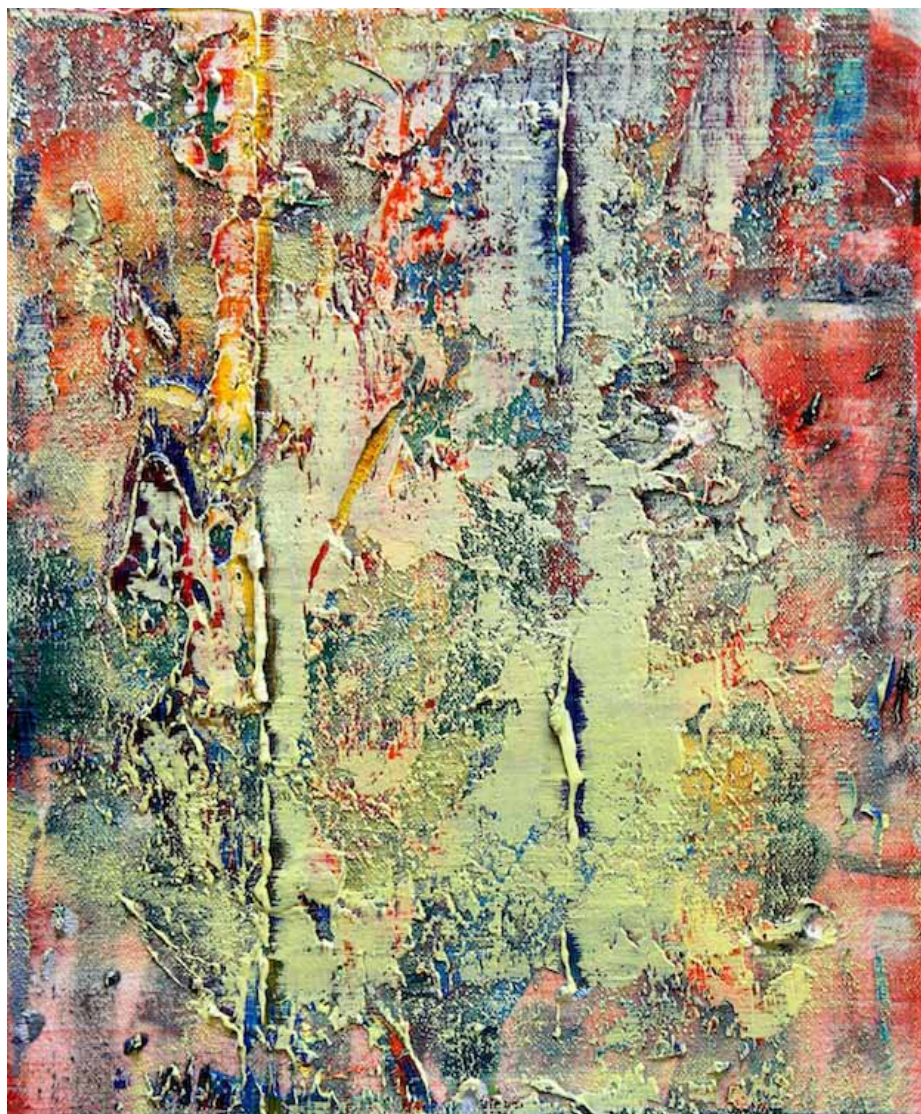


**Slim Slow Slider**

2013

24 x 18 inches

Oil on Linen



**Security Blanket**

2014

11 x 9 inches

Oil on Canvas



© Virginia Broersma

*'-rhythm with experimentation, structure with surprises, and some serious chops.'*

**Virginia Broersma**

October 28 2014, Huffington Post Review

S O N C E  
A L E X A N D E R  
G A L L E R Y

# **CHRISTOPHER KUHN**

## **MATERIAL WITNESS**

NOVEMBER 1 - DECEMBER 18, 2014

All images © Christopher Kuhn

All rights reserved. No part of this publication may be duplicated or transmitted in any form without written consent from Sonce Alexander Gallery. Unauthorized broadcasting, copying or duplicating of this publication or the works will constitute an infringement of copyright.

With thanks: Ann Harezlak, Basak Comert, Alexandra Beetz and Taylor Lee

Sonce Alexander Gallery  
2634 South La Cienega Blvd.  
Los Angeles, CA 90034  
1 310 559 8181  
[www.soncealexandergallery.com](http://www.soncealexandergallery.com)